

DATE	SYM	REVISION RECORD	AUTH	DR	CK
09-03-03	-	DCN 2269	DQ	RJ	DF
12-01-04	-	DCN 2515	WDN	DF	PW
03-07-05	-	DCN 2551	<i>AD</i>	<i>AB</i>	<i>DE</i>

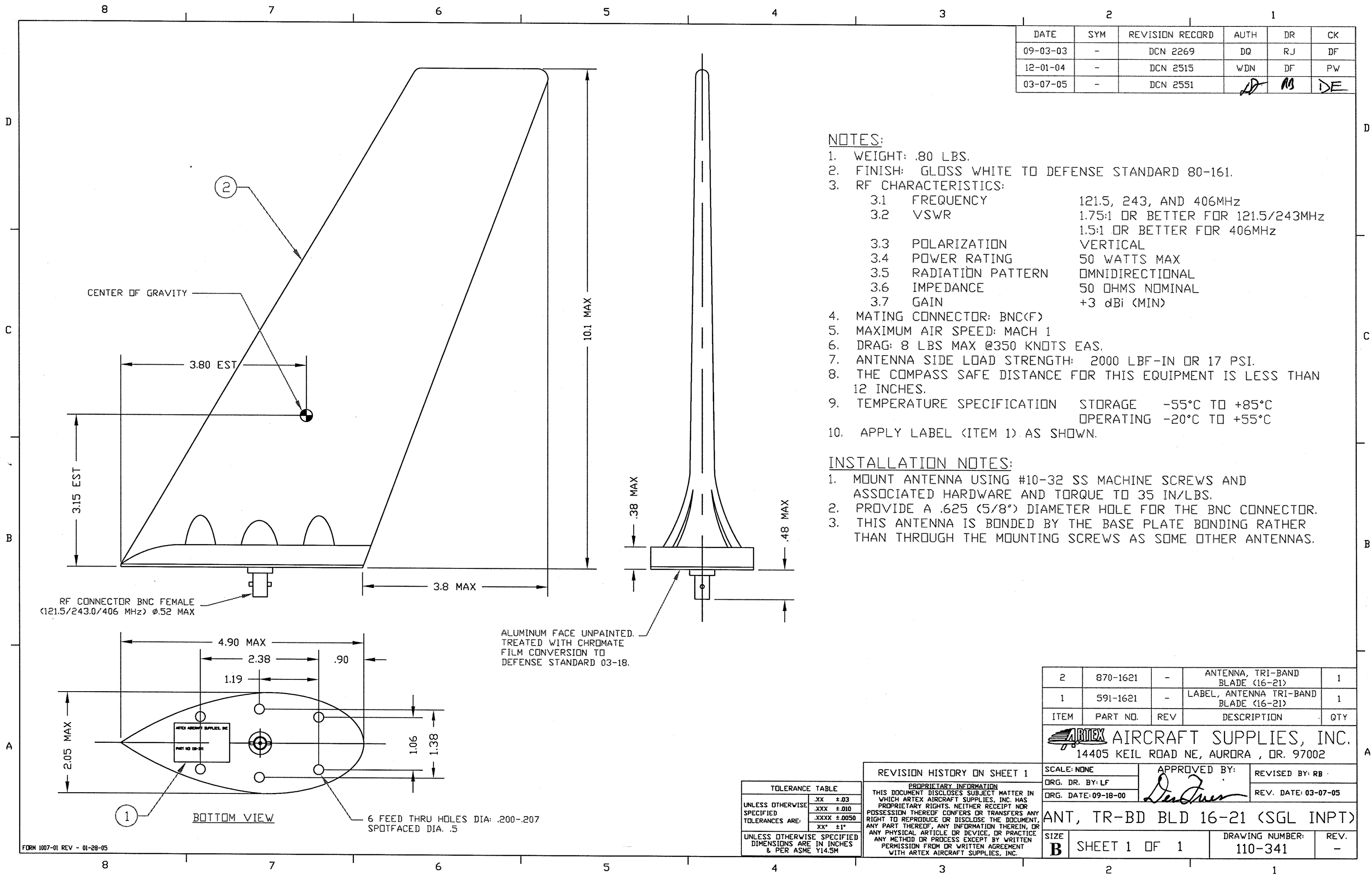
NOTES:

- WEIGHT: .80 LBS.
- FINISH: GLOSS WHITE TO DEFENSE STANDARD 80-161.
- RF CHARACTERISTICS:

3.1 FREQUENCY	121.5, 243, AND 406MHZ
3.2 VSWR	1.75:1 OR BETTER FOR 121.5/243MHZ 1.5:1 OR BETTER FOR 406MHZ
3.3 POLARIZATION	VERTICAL
3.4 POWER RATING	50 WATTS MAX
3.5 RADIATION PATTERN	OMNIDIRECTIONAL
3.6 IMPEDANCE	50 OHMS NOMINAL
3.7 GAIN	+3 dBI (MIN)
- MATING CONNECTOR: BNC(F)
- MAXIMUM AIR SPEED: MACH 1
- DRAG: 8 LBS MAX @350 KNOTS EAS.
- ANTENNA SIDE LOAD STRENGTH: 2000 LBF-IN OR 17 PSI.
- THE COMPASS SAFE DISTANCE FOR THIS EQUIPMENT IS LESS THAN 12 INCHES.
- TEMPERATURE SPECIFICATION STORAGE -55°C TO +85°C
OPERATING -20°C TO +55°C
- APPLY LABEL (ITEM 1) AS SHOWN.

INSTALLATION NOTES:

- MOUNT ANTENNA USING #10-32 SS MACHINE SCREWS AND ASSOCIATED HARDWARE AND TORQUE TO 35 IN/LBS.
- PROVIDE A .625 (5/8") DIAMETER HOLE FOR THE BNC CONNECTOR.
- THIS ANTENNA IS BONDED BY THE BASE PLATE BONDING RATHER THAN THROUGH THE MOUNTING SCREWS AS SOME OTHER ANTENNAS.



TOLERANCE TABLE	
UNLESS OTHERWISE SPECIFIED	.XX ±.03
	.XXX ±.010
TOLERANCES ARE:	.XXXX ±.0050
	XX' ±1"
UNLESS OTHERWISE SPECIFIED DIMENSIONS ARE IN INCHES & PER ASME Y14.5M	

REVISION HISTORY ON SHEET 1

PROPRIETARY INFORMATION
THIS DOCUMENT DISCLOSES SUBJECT MATTER IN WHICH ARTEX AIRCRAFT SUPPLIES, INC. HAS PROPRIETARY RIGHTS. NEITHER RECEIPT NOR POSSESSION THEREOF CONFERS OR TRANSFERS ANY RIGHT TO REPRODUCE OR DISCLOSE THE DOCUMENT, ANY PART THEREOF, ANY INFORMATION THEREIN, OR ANY PHYSICAL ARTICLE OR DEVICE, OR PRACTICE ANY METHOD OR PROCESS EXCEPT BY WRITTEN PERMISSION FROM OR WRITTEN AGREEMENT WITH ARTEX AIRCRAFT SUPPLIES, INC.

ITEM	PART NO.	REV	DESCRIPTION	QTY
2	870-1621	-	ANTENNA, TRI-BAND BLADE (16-21)	1
1	591-1621	-	LABEL, ANTENNA TRI-BAND BLADE (16-21)	1

ARTEX AIRCRAFT SUPPLIES, INC.
14405 KEIL ROAD NE, AURORA, OR. 97002

SCALE: NONE
ORG. DR. BY: LF
ORG. DATE: 09-18-00
APPROVED BY: *[Signature]*
REVISED BY: RB
REV. DATE: 03-07-05

ANT, TR-BD BLD 16-21 (SGL INPT)

SIZE	SHEET 1 OF 1	DRAWING NUMBER:	REV.
B		110-341	-