

INSTALLATION INSTRUCTIONS:

- A. The drawing main view, sections F-F & B-B shows the configuration of the aircraft for regular flight, without the camera installed. When the camera is installed, the -11 cover plates are removed and the -15 deflector angle is installed on the bottom of the fuselage in place of the -11 cover plate, and the -17 (optional) camera mounting plate is installed in the floor over the baggage area as shown in sections C-C, D-D, & E-E.
- B. The -17 camera mounting plate may have any number of holes drilled into for the mounting of the camera and accessories provide 2D edge distance and 4D on center spacing minimums.
- C. Weight of camera and accessories may not exceed the allowable weight of the baggage compartment.
- D. The baggage retainer net must be installed when the camera and accessories are installed.
- E. The -25 Camera Mount is one way of mounting a small camera.

This drawing has been prepared for a specific alteration to a specific aircraft or component based on information supplied to Aviation Engineering Consultants of USA, LLC (AECUSA-LLC) by the person responsible for arranging the alteration or his agent. The use of the data on any other aircraft or component may lead to an unsafe alteration and therefore the data is not to be used for any other purpose than for which it was originally supplied without the written approval of AECUSA-LLC.



6			MS21042-4	LOCK NUT				19
6			MS25339-44	LOCK WASHER				18
12			AN960-416L	WASHER				17
6			AN4	BOLT				16
1			-25	CAMERA MOUNT				15
-			-23	ANGLE	2024-T3 AMS-QQ-A-250/5		:125X2X2	14
	40		AN526C1032	SCREW				13
	40		MS21059L03	NUT, PLATE				12
		AR	-21	FILLER	0.040 2024-T3 AMS-QQ-A-250/5			11
		20	-19	ANGLE ASSY				10
1		AR	-17	CAMERA MOUNTING PLATE	0.25 6062-T6 AMS-QQ-A-XXX			9
		1	-15	DEFLECTOR ANGLE				8
		2	-13	PLACARD				7
		2	-11	COVER PLATE	0.040 2024-T3 AMS-QQ-A-250/5			6
		2	-09	SHROUD	0.040 2024-T3 AMS-QQ-A-250/5			5
		1	-07	DOUBLER - SKIN	0.040 2024-T3 AMS-QQ-A-250/5			4
		1	-05	DOUBLER - FLOOR	0.040 2024-T3 AMS-QQ-A-250/5			3
	1	20	-03	ANGLE	0.063 2024-T3 AMS-QQ-A-250/5		.063X1X1	2
			-01	CAMERA PORT INSTALLATION				1
-25	-19	-1	NOTE	PART NO.	NOMENCLATURE OR DESCRIPTION	MATERIAL / SPECIFICATION	STOCK SIZE	ITEM NO.

PARTS LIST

DIMENSIONS ARE IN INCHES  
TOLERANCES:  
.X= ±.1, .XX= ±.03  
.XXX= ±.015  
ANGLES ±0°-30'

NOTICE - This drawing is the property of Aviation Engineering Consultants of USA, LLC, and any disclosure of its contents to others is given in confidence. It must not be reproduced or copied in whole or in part or used in any way except with specific approval and permission of the General Manager of Aviation Engineering Consultants of USA, LLC

**AE** AVIATION ENGINEERING  
CONSULTANTS OF USA, LLC  
Cape Coral, FL  
800-977-1992

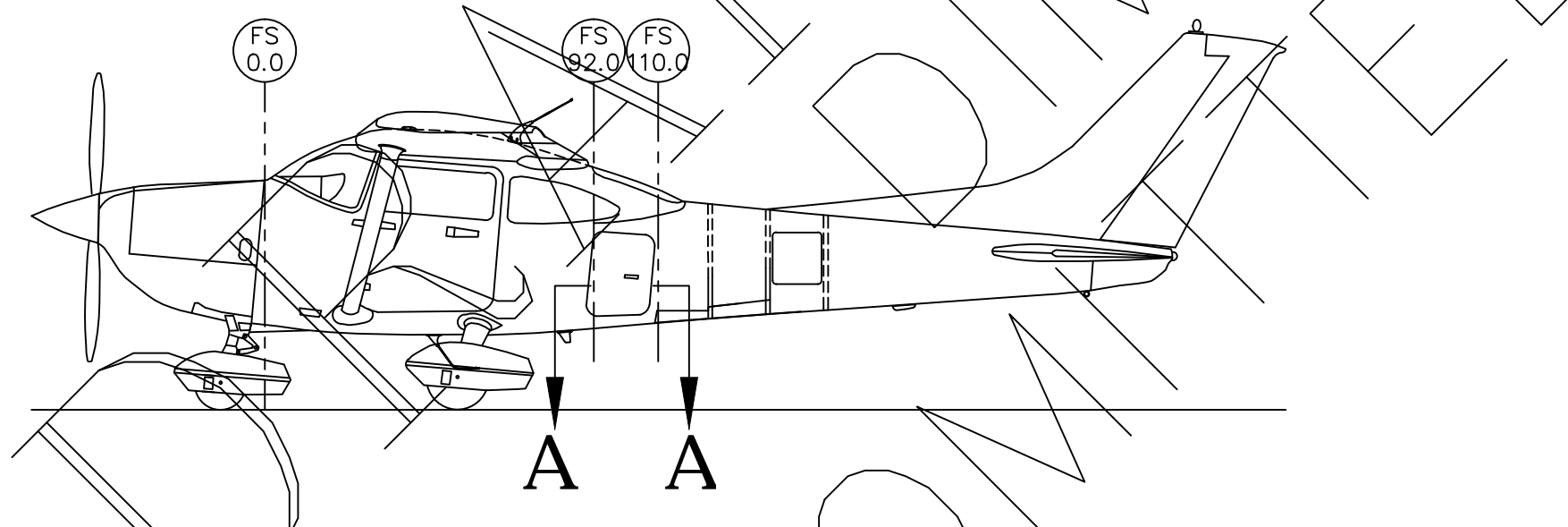
TITLE: CAMERA PORT INST - CESSNA 182

APPRVD **F. BROWN** 2011-0x REV. - DWG. NO. 00-1500-02-01-XXX SHEET 1 OF 12

**GENERAL NOTES**

(UNLESS OTHERWISE SPECIFIED)

1. 10 EVEN SPACES AROUND HOLE. ORIENTATION IS NOT CRITICAL. ADJUST ORIENTATION TO AVOID EXISTING FEATURES.
2. 10 EVEN SPACES AROUND HOLE. ORIENTATION IS CRITICAL.
3. Fabricate per AC 43.13.
4. Assembly shop practice per AC 43.13.
5. All bend radii R .25.
6. All bend relief's R .16.
7. Flange corner radii are to be R .25.
8. Alodine all aluminum parts per Mil-C-5541.
9. Epoxy prime per Mil-P-23377.
10. Surface finish of parts to be 125 microinches
11. Fastener symbols per NAS 523.
12. Remove all burrs and sharp edges.
13. Torque per AC 43.13-1A or MIL-N-25027.
14. Install safety wire per AC 43.13-1A or MS33540.
15. All dimensions are prior to finish applications.
16. Equally spaced attachment tolerance to be +/- 0.100".
17. Minimum attachment spacing to be 4D+.060" center to center.
18. Attachments located from part edge 2D+.060" for details, 2D minimum on assembly, 2D from joggles and adjacent structure.
19. Identify per MIL-STD-130 using rubber stamp or and written with indelible ink. Small assemblies may be tagged.
20. Symbols + between end fastener symbols indicate identical fasteners equally spaced.
21. Install solid rivets per AC 43.13-1A. Install all other fasteners per manufacturer's instructions.
22. Free flanges angular tolerance +/- 5 degrees (flanges not attached at next assy).
23. Restrained flanges angular tolerance +/- 1.5 degrees (flanges attached at next assy).
24. Faying surface seal all external skin mating joints and install fasteners wet using PR1431G or P/S 870C sealant.
25. Fillet or brush coat edges of mating parts using PR1422-B2, CS3204 class B, or P/S 890 class B sealant.
26. Pilot holes #40 drill for next assy fastener locations may be added or deleted by mfg.
27. Mix all sealants and adhesives per the Mfg's instructions.



**-01 CAMERA PORT INSTALLATION**

DIMENSIONS ARE IN INCHES  
 TOLERANCES:  
 .XX = ±.03  
 .XXX = ±.015  
 ANGLES ±0°-30'

NOTICE - This drawing is the property of Aviation Engineering Consultants of USA, Inc., and any disclosure of its contents to others is given in confidence. It must not be reproduced or copied in whole or in part or used in any way except with specific approval and permission of the General Manager of Aviation Engineering Consultants of USA, Inc.



**AVIATION ENGINEERING  
 CONSULTANTS OF USA, LLC**  
 Cape Coral, FL  
 800-977-1992

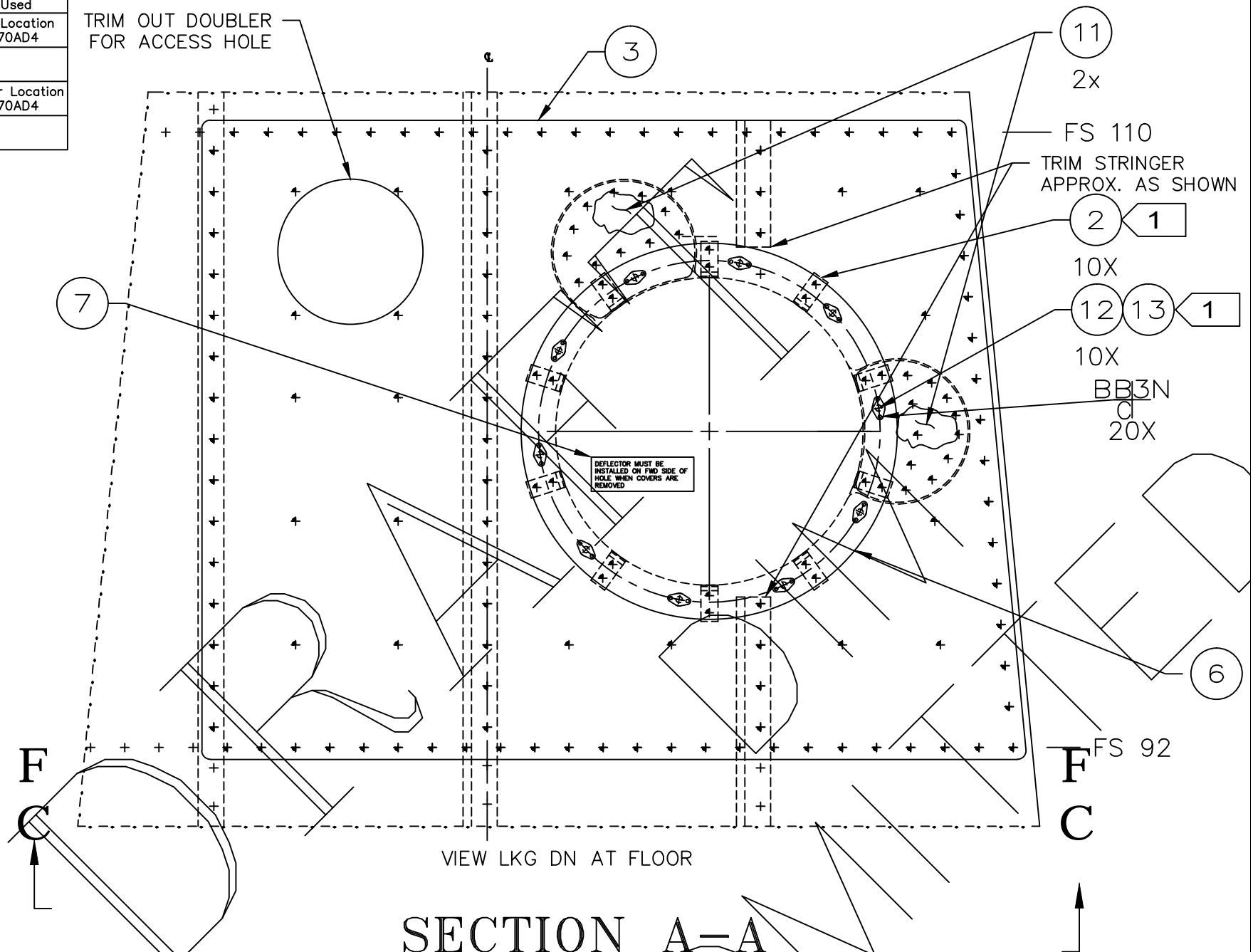
TITLE CAMERA PORT INST - CESSNA 182

DWG. NO. 00-1500-02-01-XXX

Rev. - SHEET 2

SYM	FASTENER
+	Existing Fastener Location - Not Used
⊕	Added Fastener Location - Install MS20470AD4
⊖	Baggage Net Tie Down Location
⊕	Existing Fastener Location - Install MS20470AD4

TRIM OUT DOUBLER FOR ACCESS HOLE



VIEW LKG DN AT FLOOR

# SECTION A-A

DIMENSIONS ARE IN INCHES  
 TOLERANCES:  
 .XX = ±.03  
 .XXX = ±.015  
 ANGLES ±0°-30°

NOTICE - This drawing is the property of Aviation Engineering Consultants of USA, Inc., and any disclosure of its contents to others is given in confidence. It must not be reproduced or copied in whole or in part or used in any way except with specific approval and permission of the General Manager of Aviation Engineering Consultants of USA, Inc.

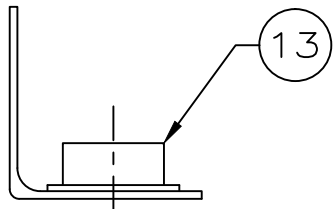


AVIATION ENGINEERING  
 CONSULTANTS OF USA, LLC  
 Cape Coral, FL  
 800-977-1992

TITLE CAMERA PORT INST - CESSNA 182

DWG. No. 00-1500-02-01-XXX

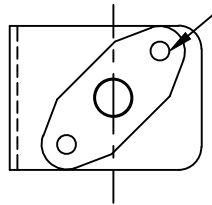
Rev. - SHEET 3



13

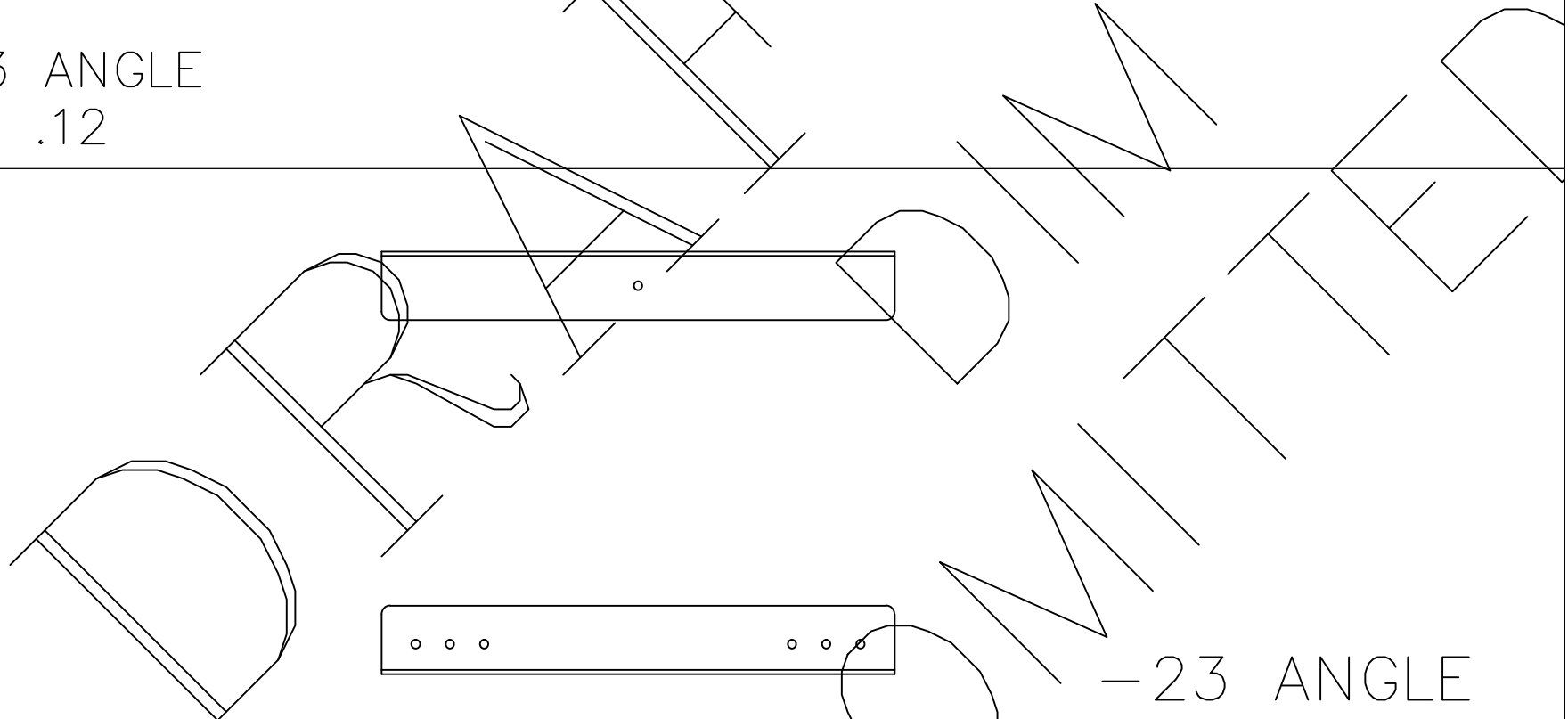
DEFLECTOR MUST BE  
INSTALLED ON FWD SIDE OF  
HOLE WHEN COVERS ARE  
REMOVED

BB3N  
C  
2X



-13 PLACARD  
.125" TEXT

-3 ANGLE  
BR .12



-23 ANGLE

DIMENSIONS ARE IN INCHES  
TOLERANCES:  
.XX = ±.03  
.XXX = ±.015  
ANGLES ±0°-30'

NOTICE - This drawing is the property of Aviation Engineering Consultants of USA, Inc., and any disclosure of its contents to others is given in confidence. It must not be reproduced or copied in whole or in part or used in any way except with specific approval and permission of the General Manager of Aviation Engineering Consultants of USA, Inc.



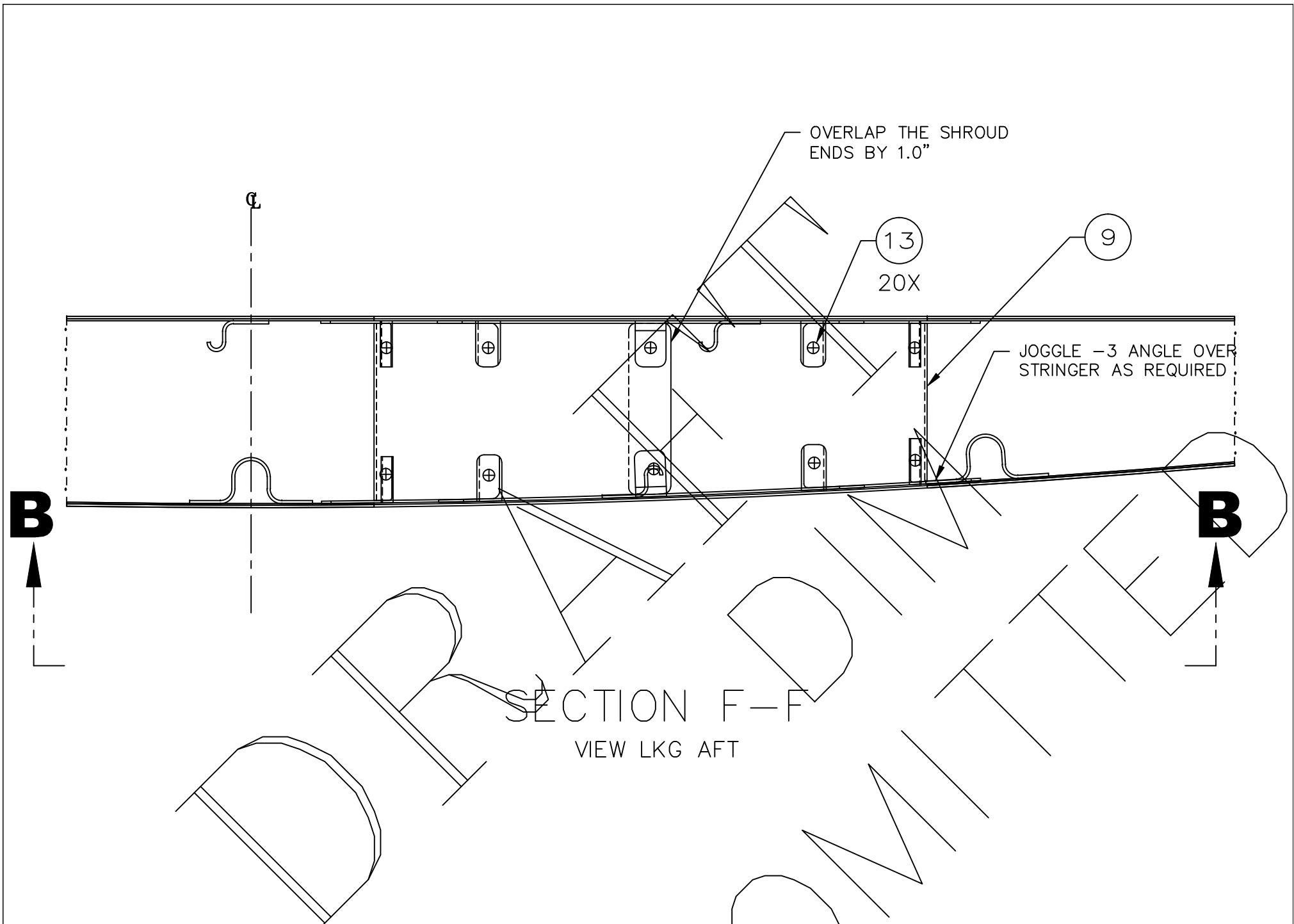
AVIATION ENGINEERING  
CONSULTANTS OF USA, LLC

Cape Coral, FL  
800-977-1992

TITLE CAMERA PORT INST - CESSNA 182

DWG. NO. 00-1500-02-01-XXX

Rev. - SHEET 4



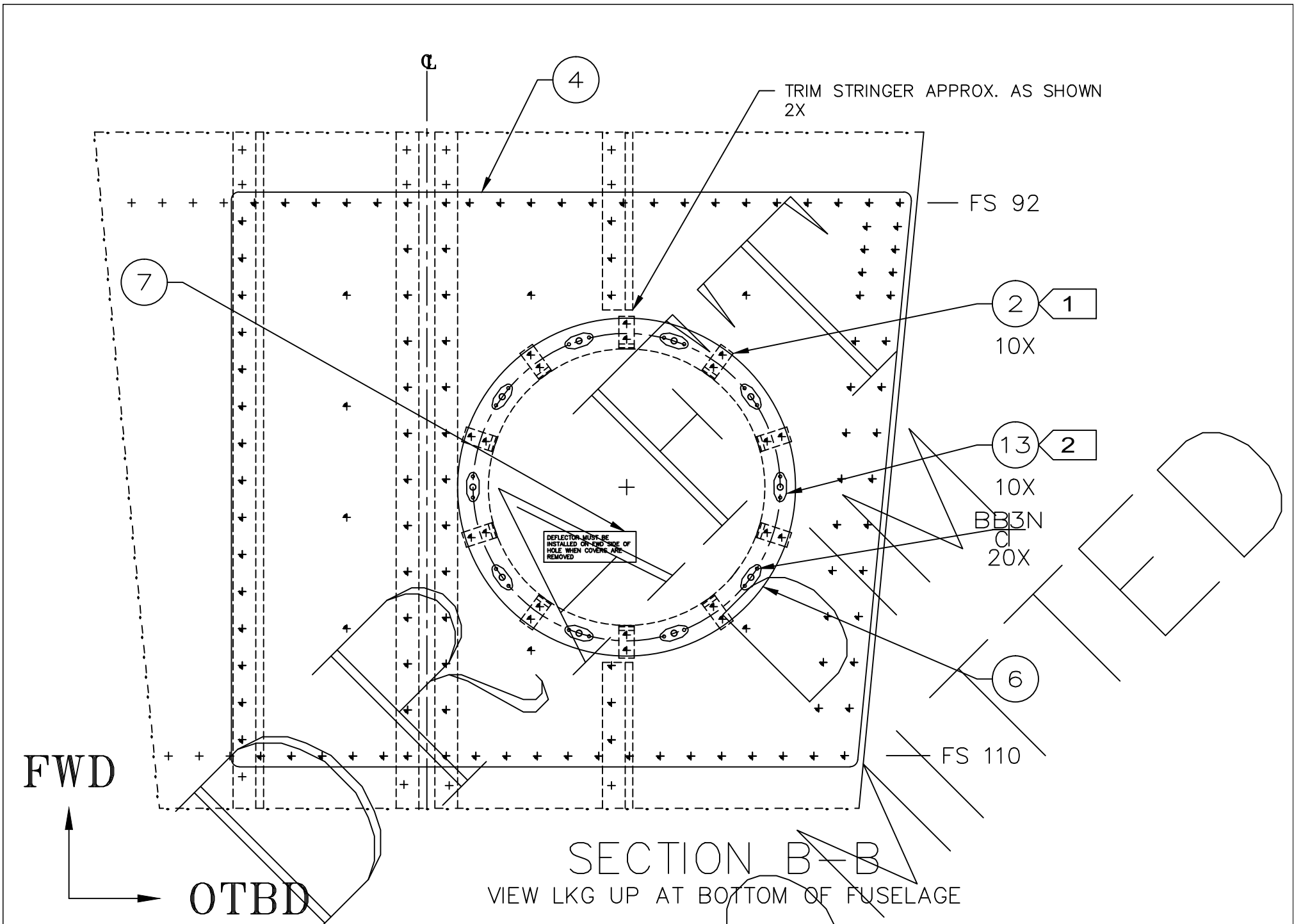
DIMENSIONS ARE IN INCHES  
TOLERANCES:  
.XX = ±.03  
.XXX = ±.015  
ANGLES ±0°-30'

NOTICE - This drawing is the property of Aviation Engineering Consultants of USA, Inc., and any disclosure of its contents to others is given in confidence. It must not be reproduced or copied in whole or in part or used in any way except with specific approval and permission of the General Manager of Aviation Engineering Consultants of USA, Inc.

**στ** AVIATION ENGINEERING  
CONSULTANTS OF USA, LLC  
Cape Coral, FL  
800-977-1992

TITLE CAMERA PORT INST - CESSNA 182  
DWG. NO. 00-1500-02-01-XXX

Rev. - SHEET 5



DIMENSIONS ARE IN INCHES  
TOLERANCES:  
.XX = ±.03  
.XXX = ±.015  
ANGLES ±0°-30'

NOTICE - This drawing is the property of Aviation Engineering Consultants of USA, Inc., and any disclosure of its contents to others is given in confidence. It must not be reproduced or copied in whole or in part or used in any way except with specific approval and permission of the General Manager of Aviation Engineering Consultants of USA, Inc.

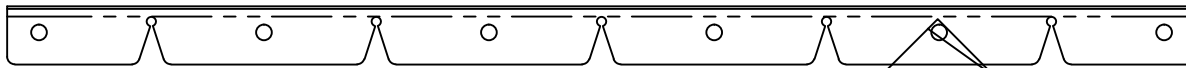


AVIATION ENGINEERING  
CONSULTANTS OF USA, LLC  
Cape Coral, FL  
800-977-1992

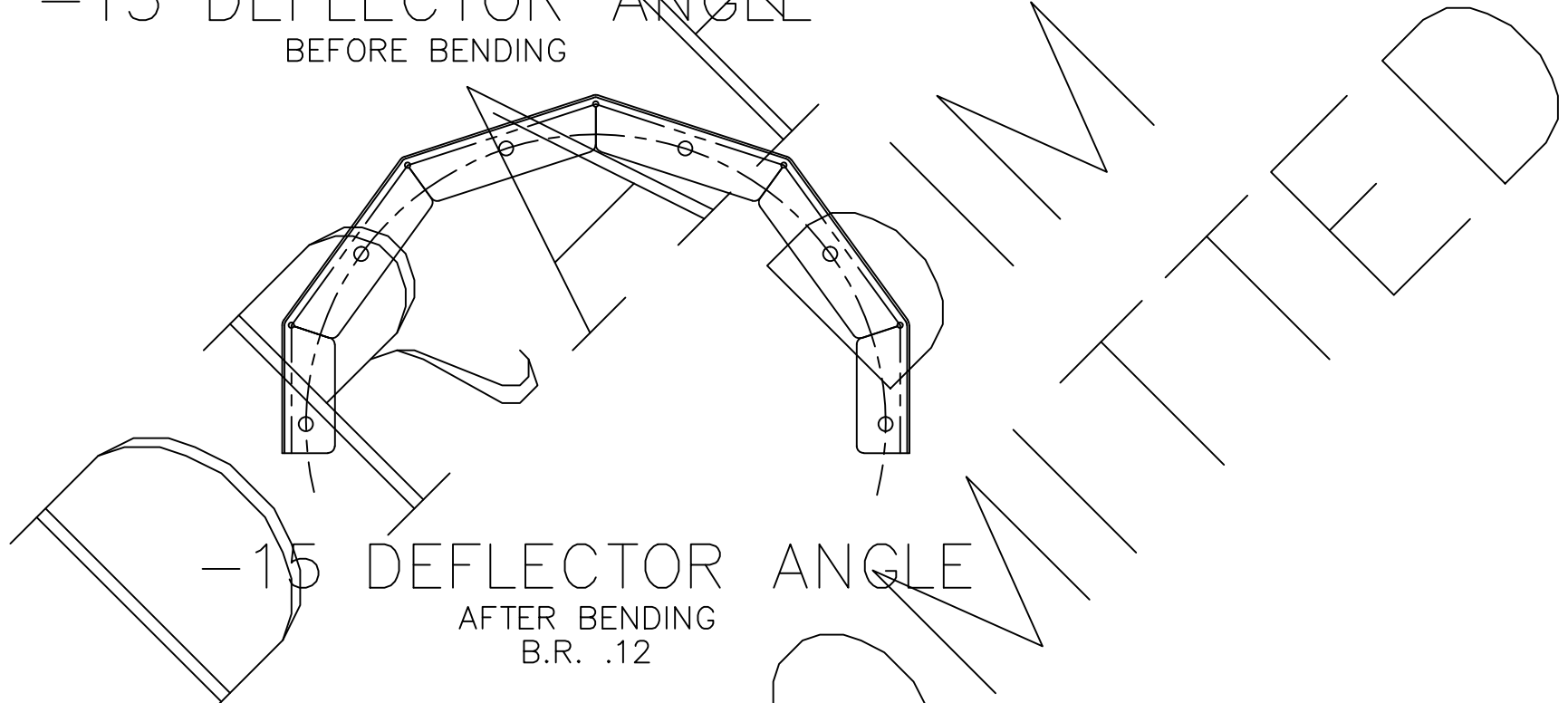
TITLE CAMERA PORT INST - CESSNA 182

DWG. NO. 00-1500-02-01-XXX

Rev. - SHEET 6



-15 DEFLECTOR ANGLE  
BEFORE BENDING



-15 DEFLECTOR ANGLE  
AFTER BENDING  
B.R. .12

DIMENSIONS ARE IN INCHES  
TOLERANCES:  
.XX = ±.03  
.XXX = ±.015  
ANGLES ±0°-30'

NOTICE - This drawing is the property of Aviation Engineering Consultants of USA, Inc., and any disclosure of its contents to others is given in confidence. It must not be reproduced or copied in whole or in part or used in any way except with specific approval and permission of the General Manager of Aviation Engineering Consultants of USA, Inc.

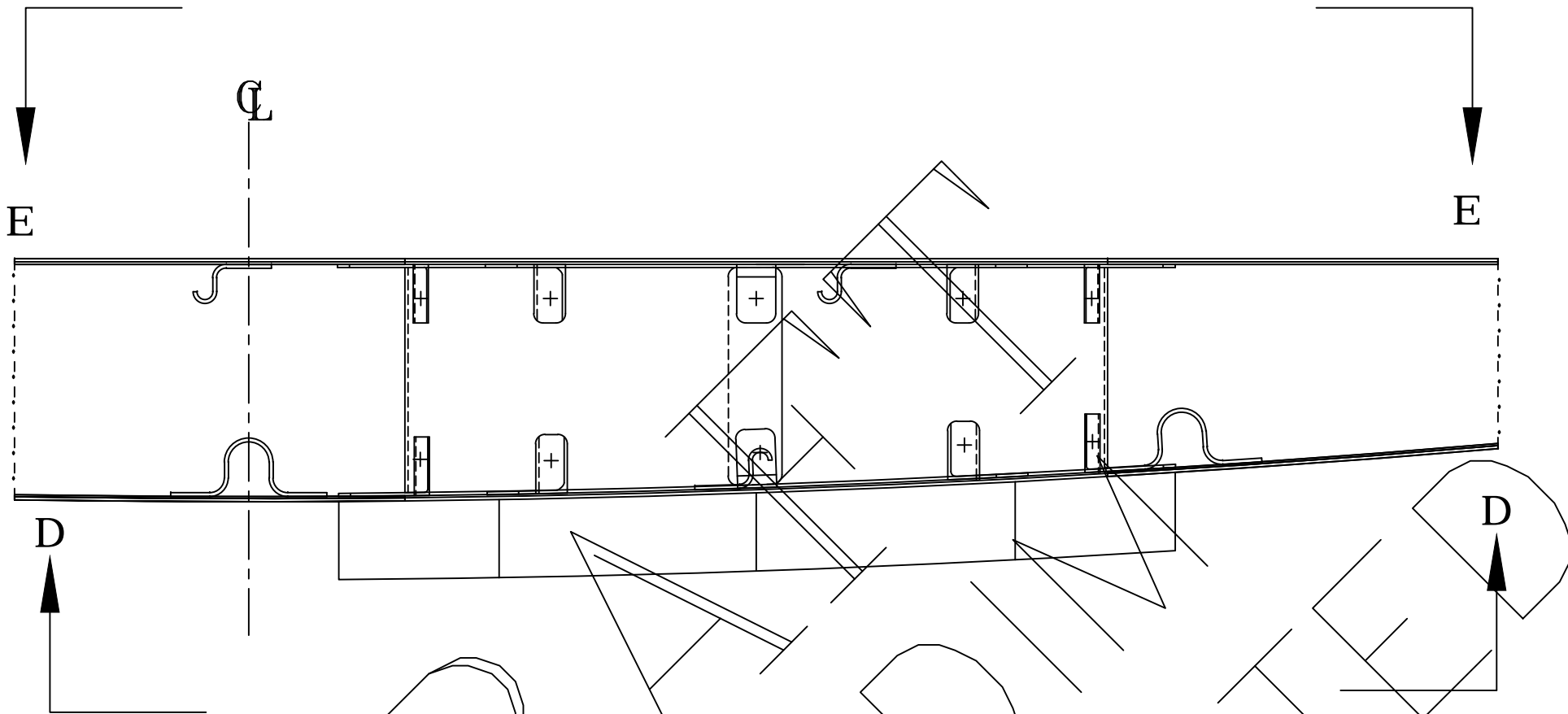


AVIATION ENGINEERING  
CONSULTANTS of USA, LLC  
Cape Coral, FL  
800-977-1992

TITLE CAMERA PORT INST - CESSNA 182

DWG. NO. 00-1500-02-01-XXX

Rev. - SHEET 7



SECTION C-C  
 VIEW LKG AFT  
 SHOWING DEFLECTOR ANGLE INSTALLED

DIMENSIONS ARE IN INCHES  
 TOLERANCES:  
 .XX = ±.03  
 .XXX = ±.015  
 ANGLES ±0°-30'

NOTICE - This drawing is the property of Aviation Engineering Consultants of USA, Inc., and any disclosure of its contents to others is given in confidence. It must not be reproduced or copied in whole or in part or used in any way except with specific approval and permission of the General Manager of Aviation Engineering Consultants of USA, Inc.



AVIATION ENGINEERING  
 CONSULTANTS OF USA, LLC  
 Cape Coral, FL  
 800-977-1992

TITLE CAMERA PORT INST - CESSNA 182

DWG. No. 00-1500-02-01-XXX

Rev. - SHEET 8

9  
OPTIONAL

BAGGAGE TIE DOWN LOCATION  
INSTALL SAME TYPE OF FASTENERS  
AS ORIGINAL  
8X

—FS 110

—FS 92

AFT

INBD

VIEW LKG DN AT FLOOR

VIEW E-E

SHOWS CAMERA MOUNTING PLATE INSTALLED

DIMENSIONS ARE IN INCHES  
TOLERANCES:  
.XX = ±.03  
.XXX = ±.015  
ANGLES ±0°-30'

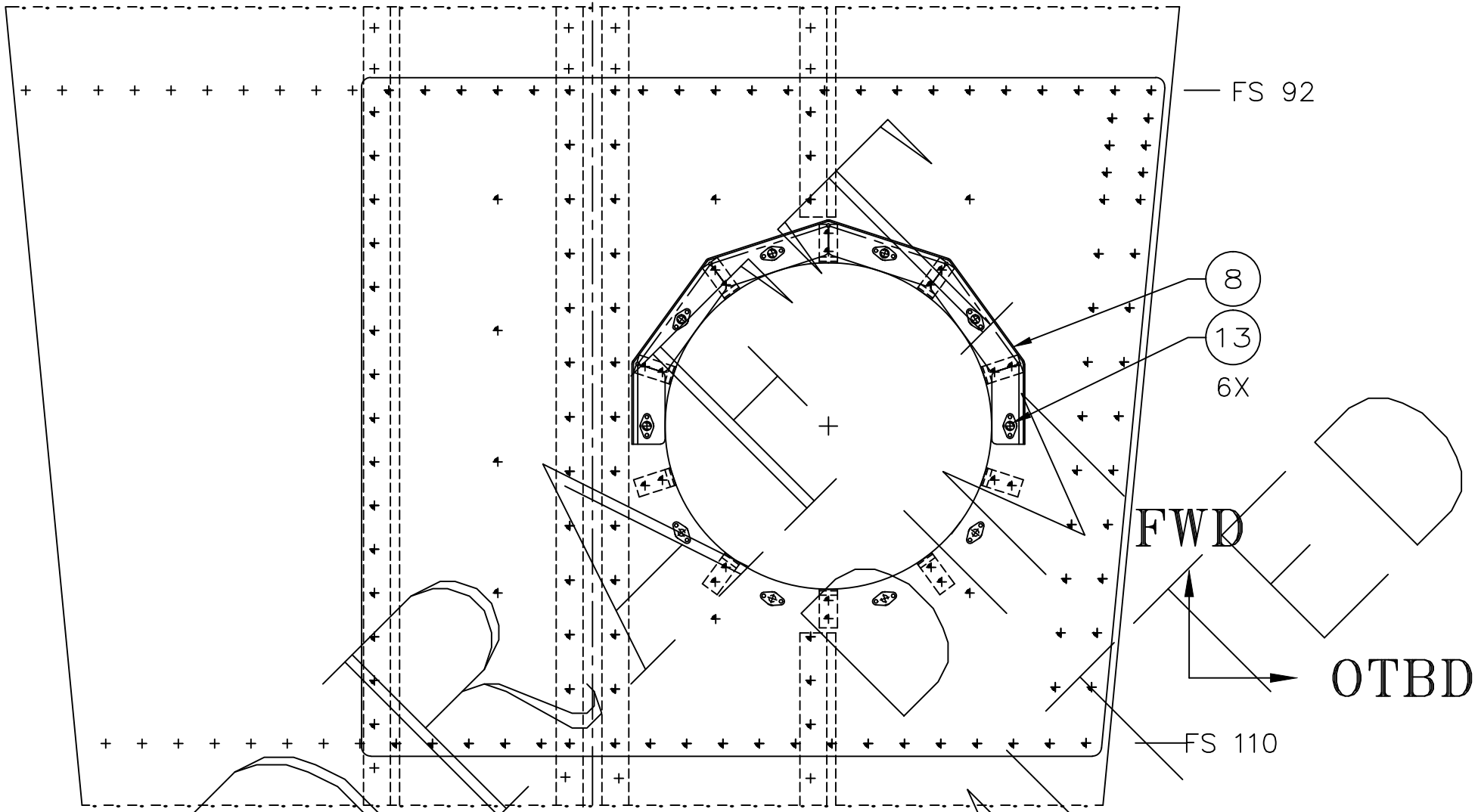
NOTICE - This drawing is the property of Aviation Engineering Consultants of USA, Inc., and any disclosure of its contents to others is given in confidence. It must not be reproduced or copied in whole or in part or used in any way except with specific approval and permission of the General Manager of Aviation Engineering Consultants of USA, Inc.

**στ** AVIATION ENGINEERING  
CONSULTANTS OF USA, LLC  
Cape Coral, FL  
800-977-1992

TITLE CAMERA PORT INST - CESSNA 182  
DWG. NO. 00-1500-02-01-XXX

Rev. - SHEET 9

Q



# SECTION D-D

VIEW LKG UP AT BOTTOM OF FUSELAGE  
SHOWS -15 DEFLECTOR ANGLE INSTALLED

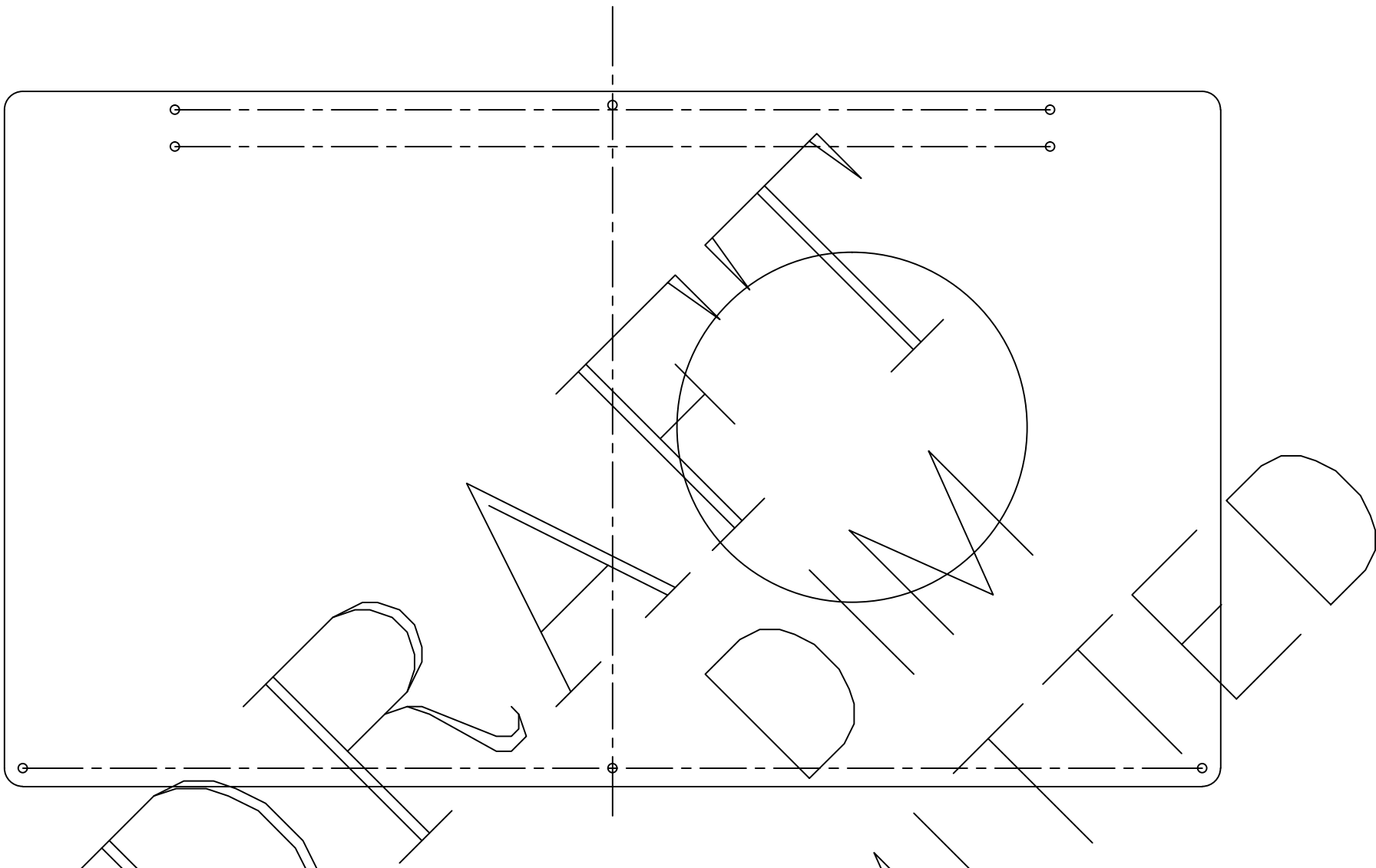
DIMENSIONS ARE IN INCHES  
 TOLERANCES:  
 .XX = ±.03  
 .XXX = ±.015  
 ANGLES ±0°-30'

NOTICE - This drawing is the property of Aviation Engineering Consultants of USA, Inc., and any disclosure of its contents to others is given in confidence. It must not be reproduced or copied in whole or in part or used in any way except with specific approval and permission of the General Manager of Aviation Engineering Consultants of USA, Inc.

**στ** AVIATION ENGINEERING  
 CONSULTANTS OF USA, LLC  
 Cape Coral, FL  
 800-977-1992

TITLE CAMERA PORT INST - CESSNA 182  
 DWG. NO. 00-1500-02-01-XXX

Rev. - SHEET 10



-1 CAMERA MOUNT PLATE

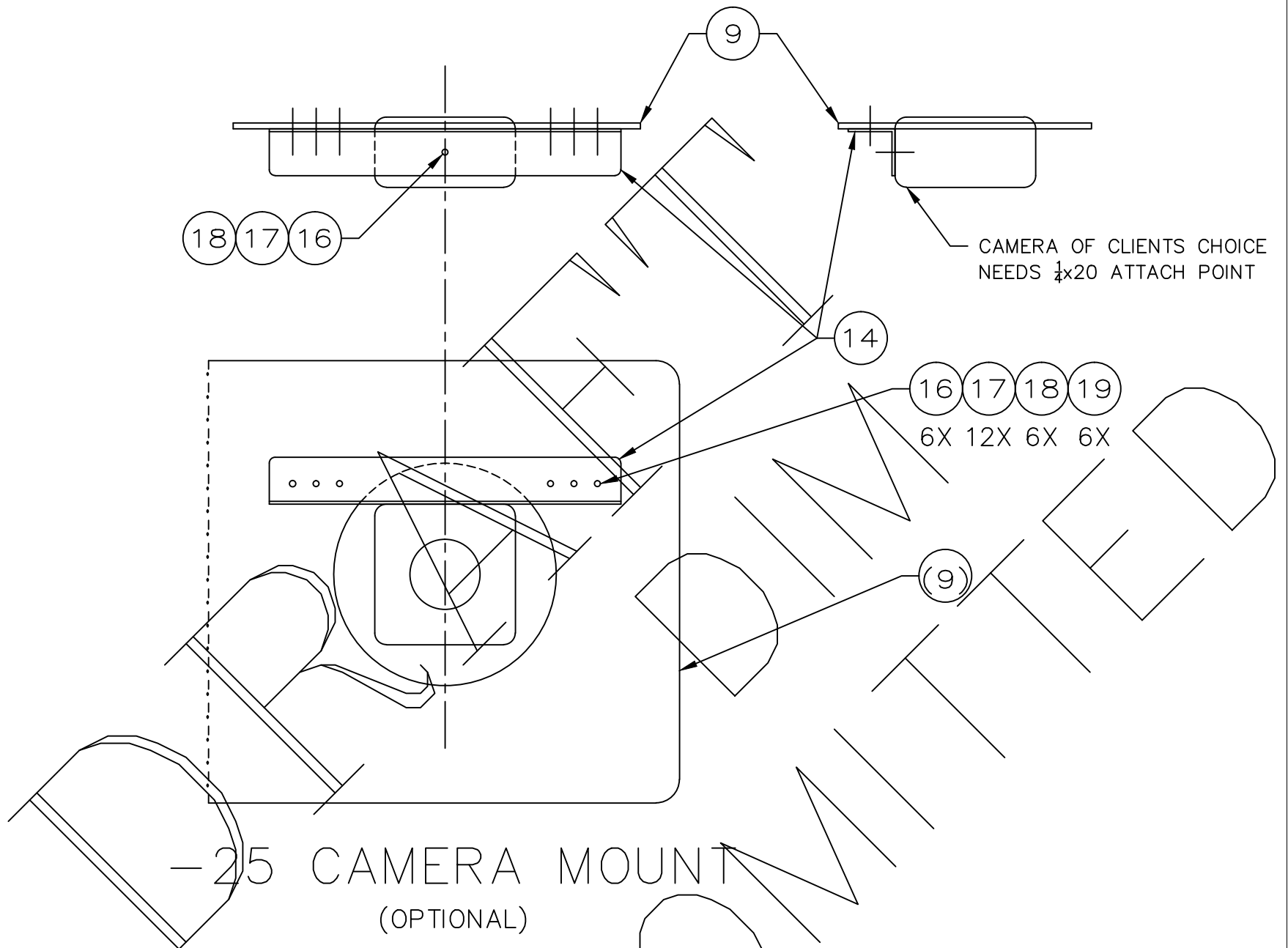
DIMENSIONS ARE IN INCHES  
 TOLERANCES:  
 .XX = ±.03  
 .XXX = ±.015  
 ANGLES ±0°-30'

NOTICE - This drawing is the property of Aviation Engineering Consultants of USA, Inc., and any disclosure of its contents to others is given in confidence. It must not be reproduced or copied in whole or in part or used in any way except with specific approval and permission of the General Manager of Aviation Engineering Consultants of USA, Inc.

**στ** AVIATION ENGINEERING  
 CONSULTANTS of USA, LLC  
 Cape Coral, FL  
 800-977-1992

TITLE CAMERA PORT INST - CESSNA 182  
 DWG. NO. 00-1500-02-01-XXX

Rev. - SHEET 11



DIMENSIONS ARE IN INCHES  
TOLERANCES:  
.XX = ±.03  
.XXX = ±.015  
ANGLES ±0°-30'

NOTICE - This drawing is the property of Aviation Engineering Consultants of USA, Inc., and any disclosure of its contents to others is given in confidence. It must not be reproduced or copied in whole or in part or used in any way except with specific approval and permission of the General Manager of Aviation Engineering Consultants of USA, Inc.



AVIATION ENGINEERING  
CONSULTANTS OF USA, LLC

Cape Coral, FL  
800-977-1992

TITLE CAMERA PORT INST - CESSNA 182

DWG. NO. 00-1500-02-01-XXX

Rev. - SHEET 12